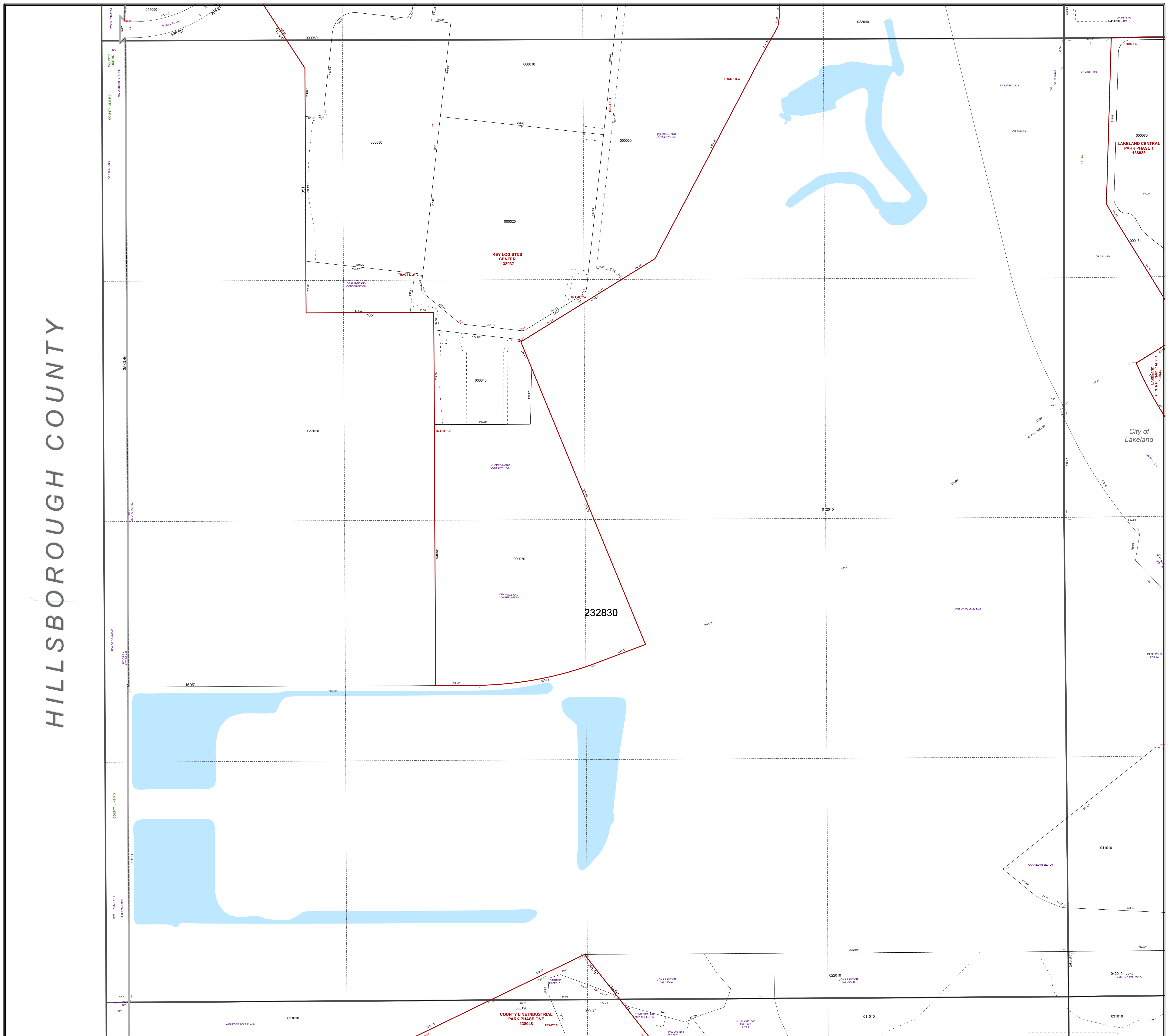
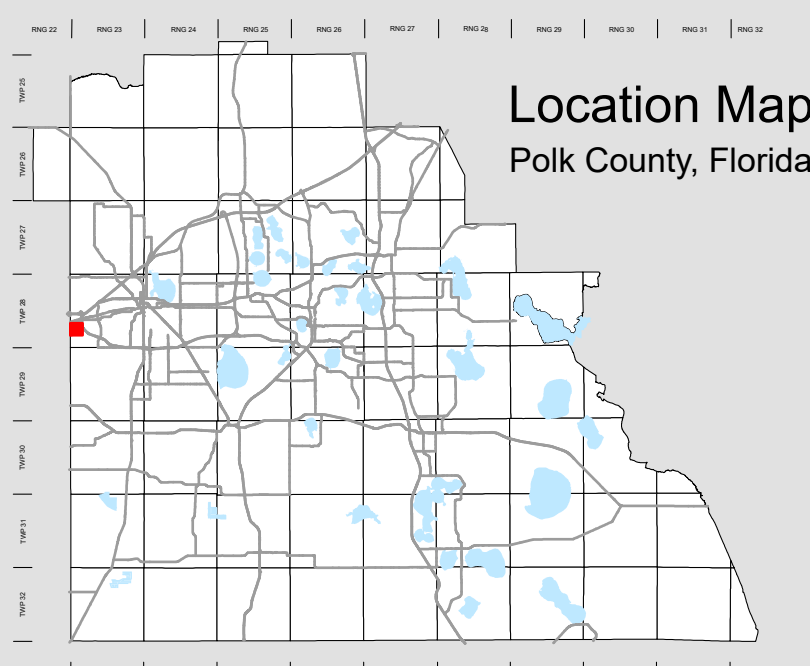


HILLSBOROUGH COUNTY



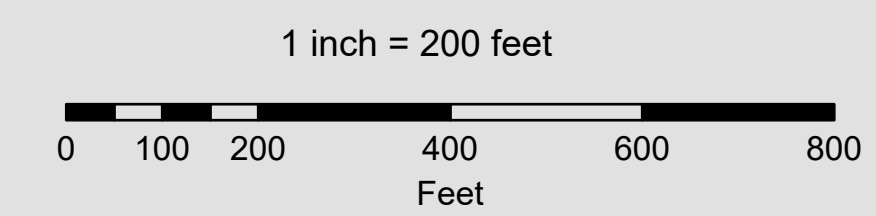
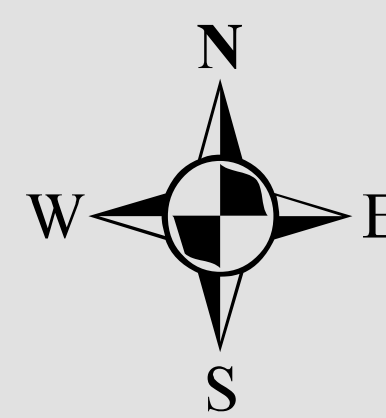
All of Section 30 Twp. 28 Rge. 23

Acres: 645 +/-



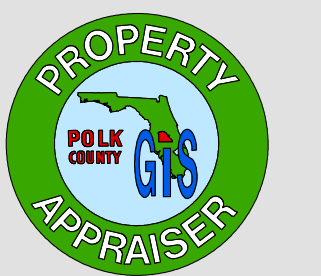
Legend

- | | | |
|----------------------|-----------------------|--------------|
| Parcels | Sections | Easements |
| Lots | Quarter Section Lines | RR Lines |
| Subdivisions | Meander Lines | Water Lines |
| Municipal Boundaries | Gov't Lots | Water Bodies |



Note: This map is a worksheet used for illustrative purposes only. This is not a survey.

Date Printed: 5/9/2026



Prepared by the office of the
Polk County Property Appraiser
 Polk County, Florida
 255 North Wilson Avenue - Bartow, Florida - 33830-3951
 (863) 534-4777