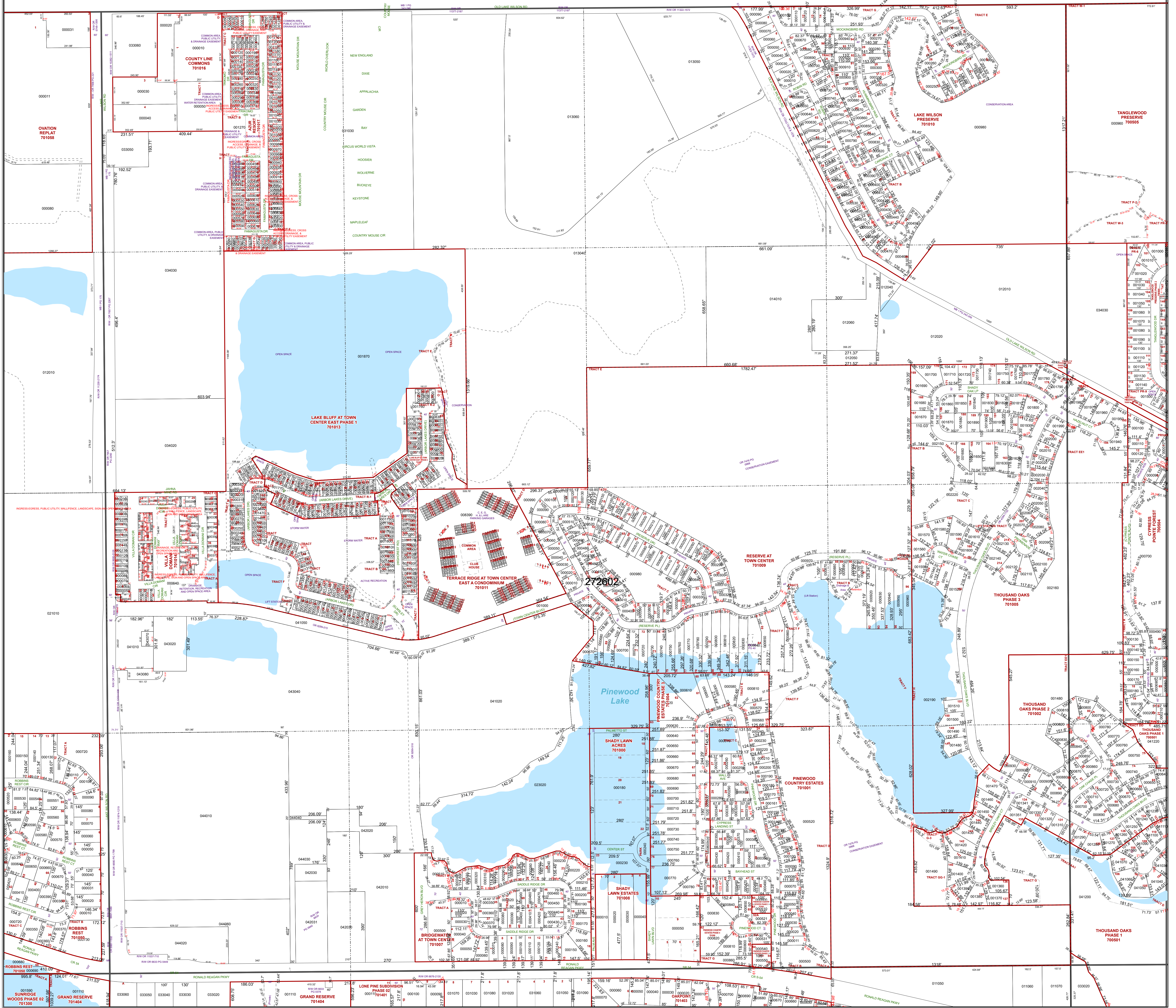
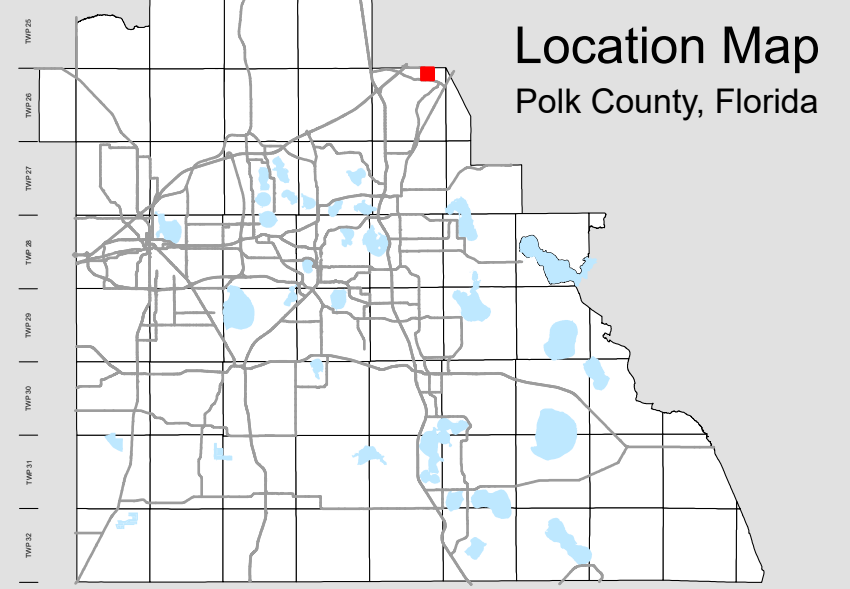


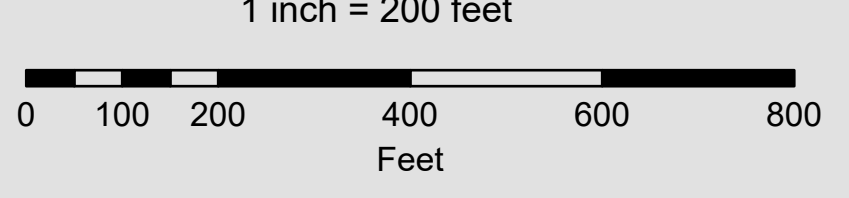
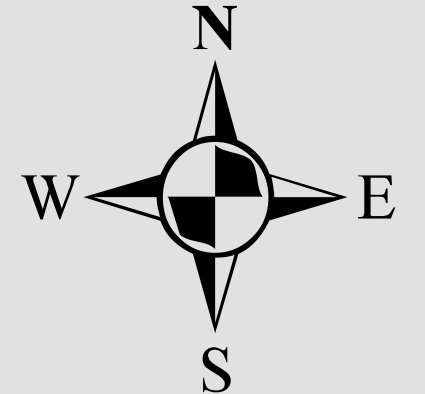
OSCEOLA COUNTY



All of Section 02 Twp. 26 Rge. 27
Acres: 642 +/-



- Legend**
- Parcels
 - Lots
 - Subdivisions
 - Municipal Boundaries
 - Sections
 - Quarter Section Lines
 - Meander Lines
 - Gov't Lots
 - Easements
 - RR Lines
 - Water Lines
 - Water Bodies



Note: This map is a worksheet used for illustrative purposes only. This is not a survey.

Date Printed: 7/4/2026



Prepared by the office of the
Polk County Property Appraiser
 Polk County, Florida
 255 North Wilson Avenue - Bartow, Florida - 33830-3951
 (863) 534-4777