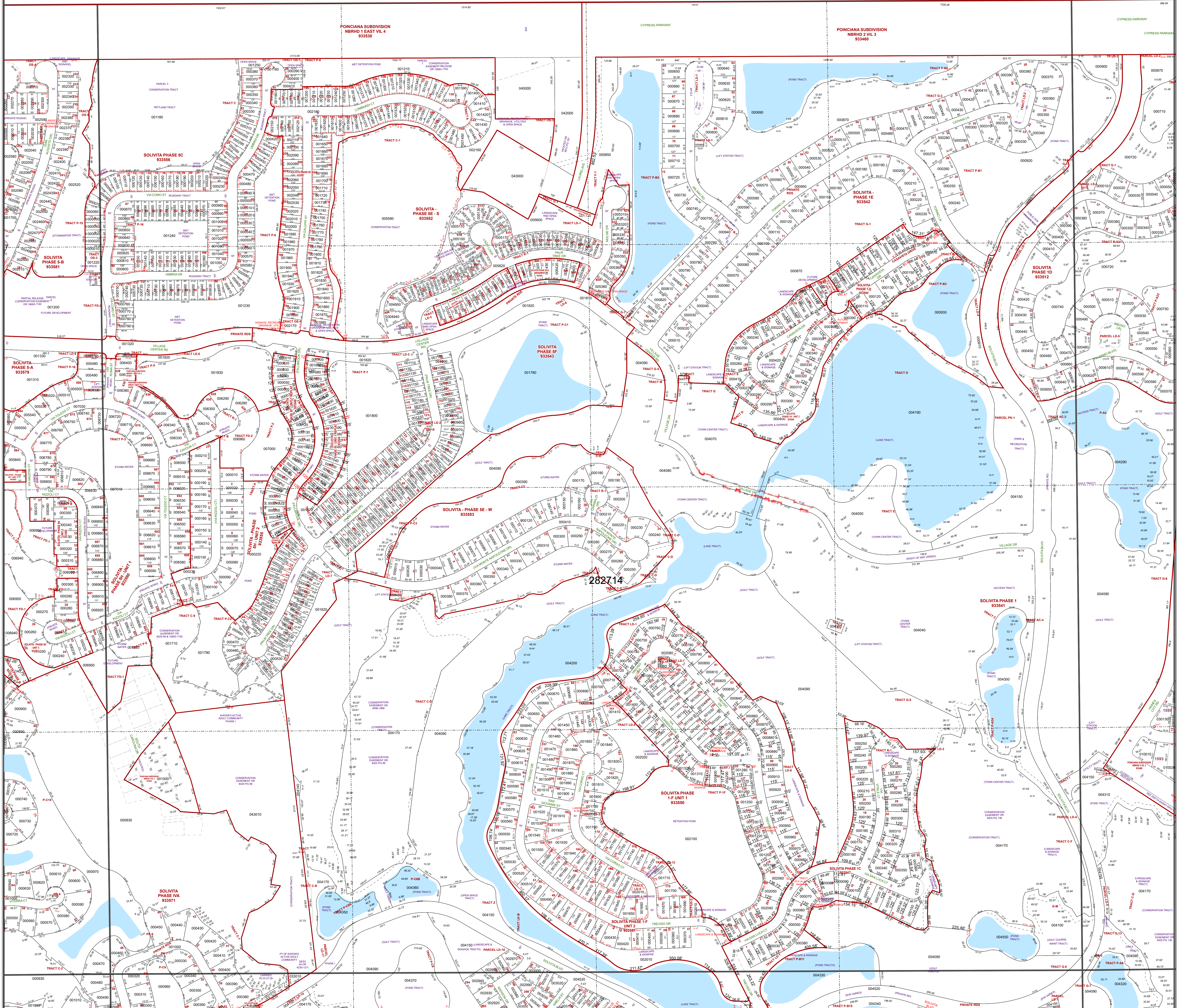


# OSCEOLA COUNTY

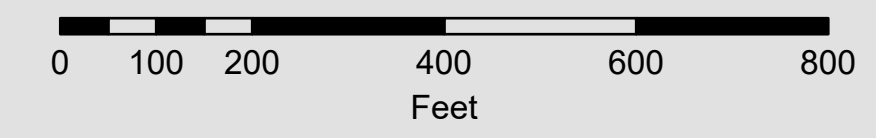


282714

## All of Section 14 Twp. 27 Rge. 28

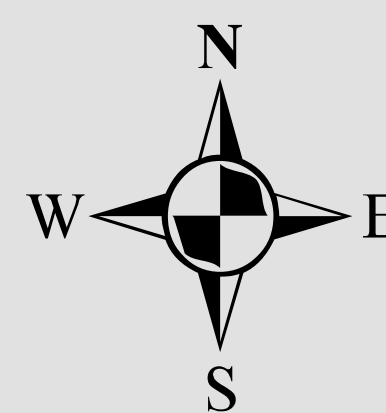
Acres: 646 +/-

1 inch = 200 feet



### Legend

- |                      |                       |              |
|----------------------|-----------------------|--------------|
| Parcels              | Sections              | Easements    |
| Lots                 | Quarter Section Lines | RR Lines     |
| Subdivisions         | Meander Lines         | Water Lines  |
| Municipal Boundaries | Gov't Lots            | Water Bodies |



Note: This map is a worksheet used for illustrative purposes only. This is not a survey.

Date Printed: 7/11/2026



Prepared by the office of the  
Polk County Property Appraiser  
Polk County, Florida  
255 North Wilson Avenue - Bartow, Florida - 33830-3951  
(863) 534-4777

