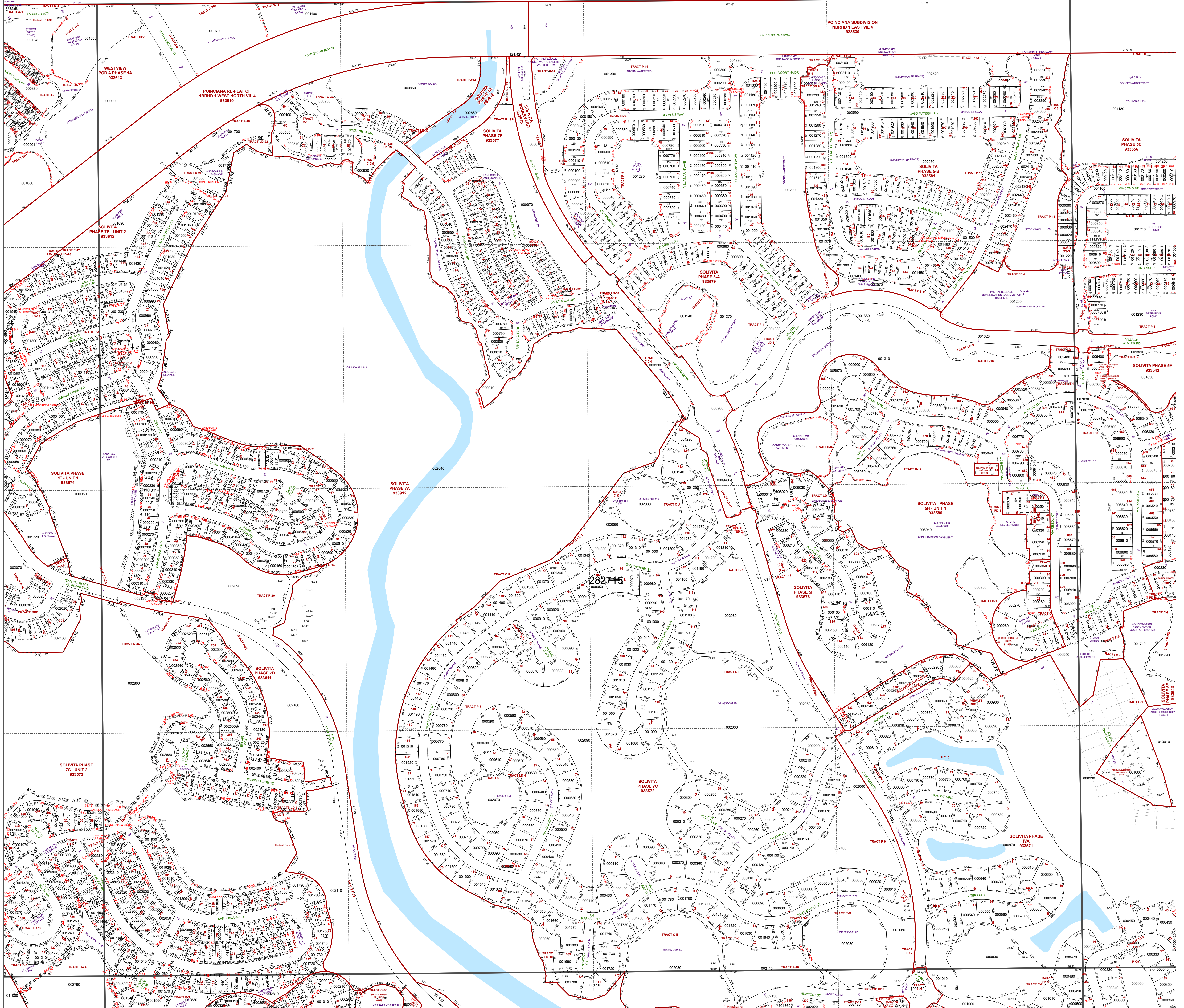
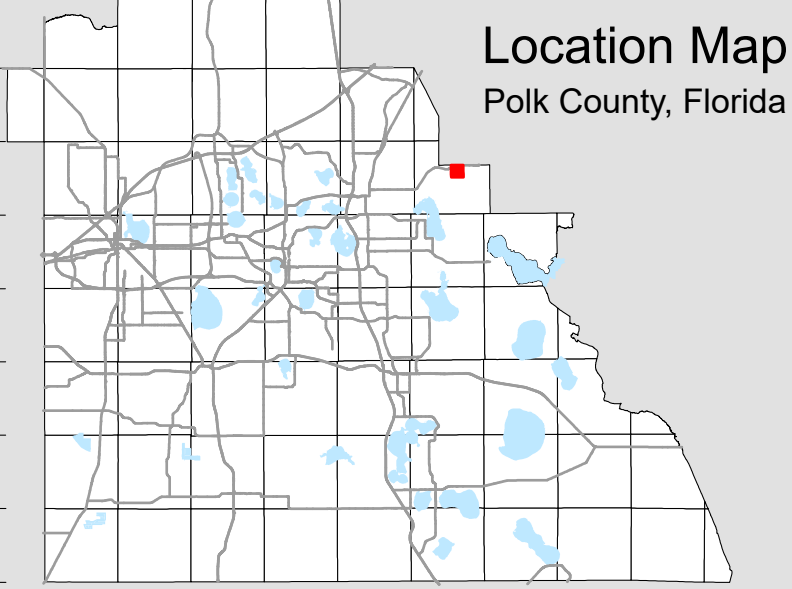


OSCEOLA COUNTY



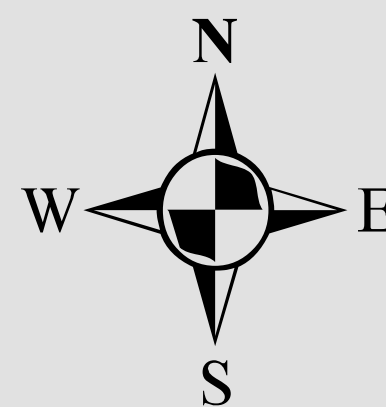
All of Section 15 Twp. 27 Rge. 28

Acres: 648 +/-



Legend

- | | | |
|----------------------|-----------------------|--------------|
| Parcels | Sections | Easements |
| Lots | Quarter Section Lines | RR Lines |
| Subdivisions | Meander Lines | Water Lines |
| Municipal Boundaries | Gov't Lots | Water Bodies |



1 inch = 200 feet
0 100 200 400 600 800
Feet

Note: This map is a worksheet used for illustrative purposes only. This is not a survey.

Date Printed: 7/4/2026



Prepared by the office of the

Polk County Property Appraiser

Polk County, Florida

255 North Wilson Avenue - Bartow, Florida - 33830-3951
(863) 534-4777